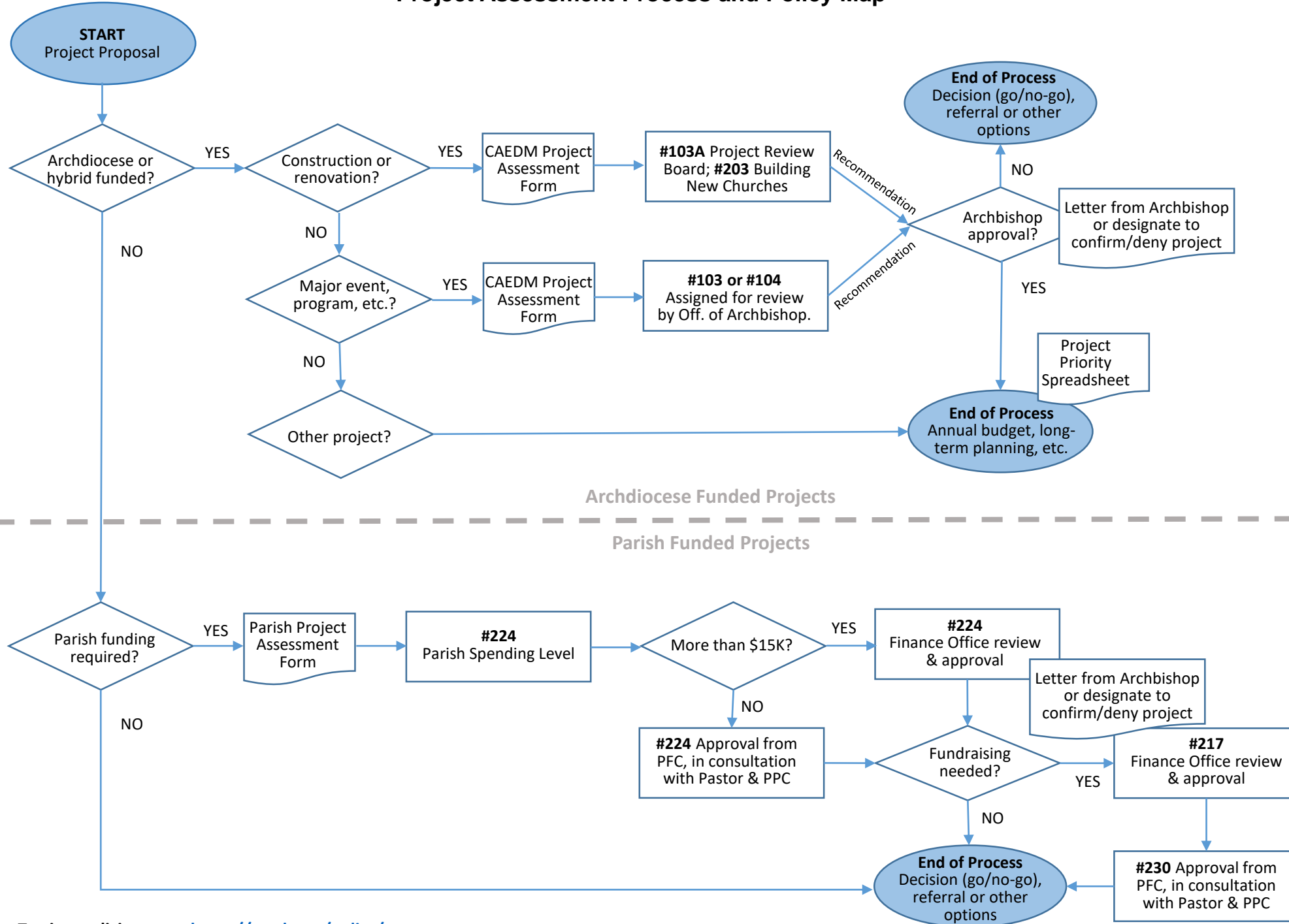


Project Assessment Process and Policy Map



Definitions

Project: A proposed solution to an identified need in the Archdiocese or in one or more parishes. Projects might include:

- New church, e.g. replacement or new parish
- New/emerging/urgent repair, e.g. leaky roof, fire or flood repair
- Planned renovations or repair, e.g. flooring replacement, add an elevator or accessible washroom
- Major event or program, e.g. Jubilee 2025, parish anniversary, new ministry

Project Proposal: A written proposal, business case or letter of intent that describes a solution to a current need.

Archdiocese Funded: Fully funded by the Archdiocese through annual budget, reserve funds, major donor(s), fundraising, etc.

Parish Funded: Fully funded by the parish/parish family through annual budget, reserve funds, building fund, major donor(s), fundraising, etc.

Hybrid Funded: Funded by a combination of Archdiocese, parish, and/or partner organizations. To be assessed on a case-by-case basis.